

40 C COTTERS LANE

East Brunswick, New Jersey 08816



Total Building SF: 38,400 SF
Available SF: 9,600 SF
Office SF: 1,550 SF
Year Built: 1976
Clear Height: 22' average
Column Spacing: 40' X 40'
Sprinklers: wet
Loading Doors: 2 tailgates
1 drive-in
Heat: Gas fired



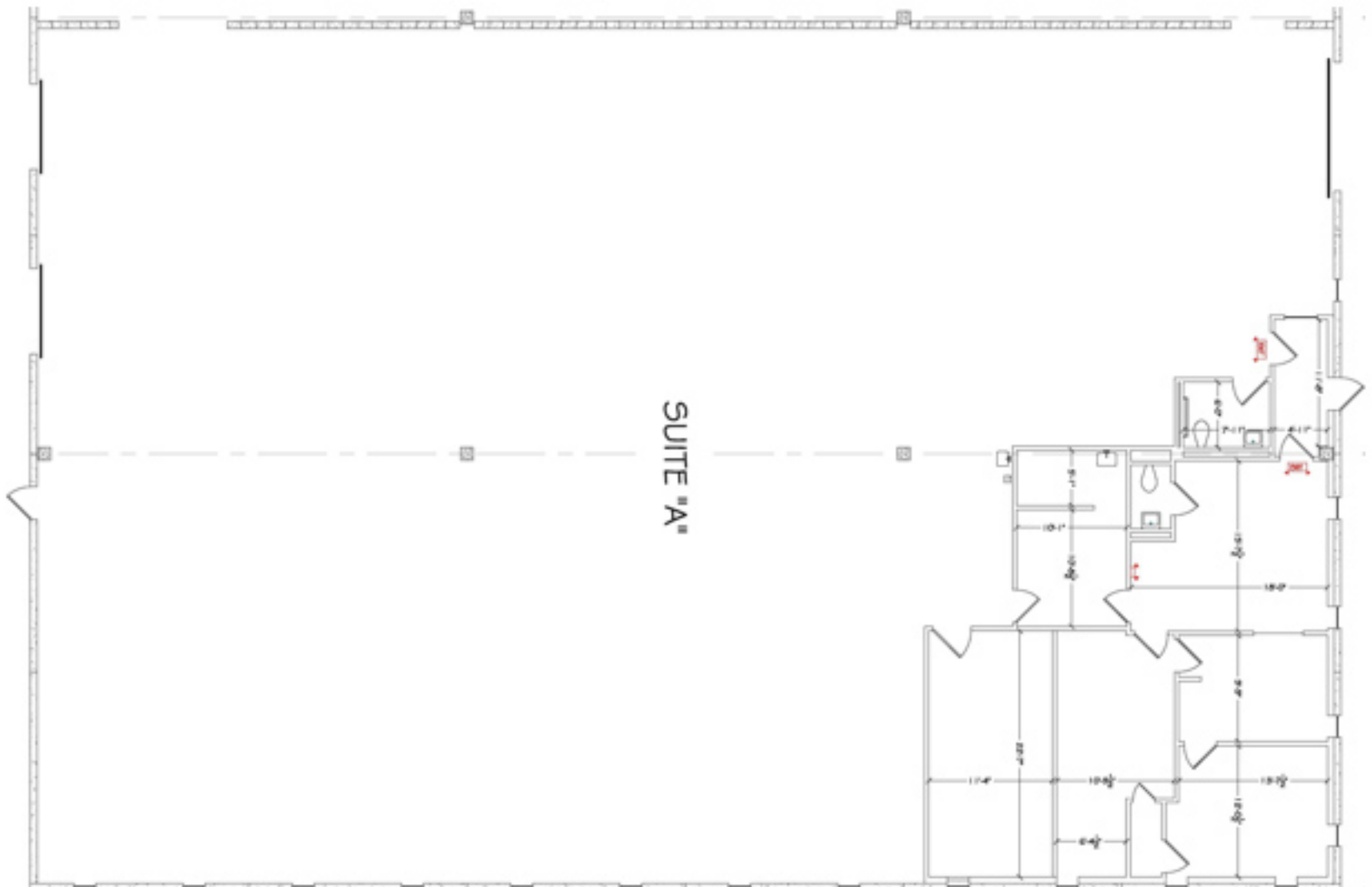
For further information please call

F. Greek Development

732.257.7353

33 Cotters Lane | East Brunswick, New Jersey 08816

Floor Plan:



For further information please call

F. Greek Development

732.257.7353

33 Cotters Lane | East Brunswick, New Jersey 08816